



# GROOVED COUPLINGS AND FITTINGS

**100TONG<sup>®</sup> IOOT<sup>®</sup>**  
**Weifang 100Tong Casting Co., Ltd.**





## Company profile

Weifang 100Tong Casting Co., Ltd, established in 2002, covering 70,000 square meters, lies in Weifang City-world kite capital, Shandong Province. There are more than 400 skillful workers, and annual output value has exceeded RMB 230 million since 2012.

100TONG is specialized in ductile iron grooved fittings and couplings, valves and coated steel pipes. The company has passed ISO9001 quality system, and grooved products has been approved by FM,UL,CE.

100TONG has five producing workshops: Auto-casting workshop, Hand molding casting workshop, Machining workshop, Painting workshop, and Moulding workshop. All grooved products are produced by the advanced casting toolings of electric furnace melting, auto-casting, and vermicularizing control. There are 6 CNC machines to make mouldings, 8 medium frequency furnaces, 4 auto-casting lines, more than 50 CNC lathes, 3 epoxy&painting lines, and the annual capacity has exceeded 50,000 tons.

100TONG as the Shandong well-known brand is enjoying high reputation among the customers for its faith, quality, price and service. Products are on sale all over 300 cities of China, and exported to the United State, Canada, Europe, Middle East, South Africa, Australia, and more than 30 countries and areas.

Service is no limit, unflagging pursuit of excellence. Weifang 100Tong Casting Co., Ltd will make unremitting pursuit towards future.



Weifang 100Tong Casting Co., Ltd.



## Export Countries





Not to be Distributed Outside of FM Approvals and its Affiliates Except by the Customer

## APPROVAL REPORT

**PIPE FITTINGS AND RIGID AND FLEXIBLE COUPLINGS IN VARIOUS SIZES WITH INCREASED PRESSURE RATING**

Prepared For:  
**Weifang 100Tong Casting Co., Ltd.**  
 No 1919 Jichang South Rd.  
 Weicheng District, Weifang 260152  
 Shandong, China

Project Identifier: 3037453  
 Class: 1920  
 Approval Date: June 30, 2010

Authorized by:

FM Approvals  
 111 Broadmeadow Triangle  
 P.O. Box 8120  
 Newark, NJ 07102

Underwriters Laboratories Inc.

7700 Ardmore Blvd., Suite 100, Chicago, IL 60630, USA

Telephone: (773) 399-1000

www.ul.com

© 2010 Underwriters Laboratories Inc.

Underwriters Laboratories Inc.

7700 Ardmore Blvd., Suite 100, Chicago, IL 60630, USA

Telephone: (773) 399-1000

www.ul.com

© 2010 Underwriters Laboratories Inc.

**EUROPEAN INSPECTION AND CERTIFICATION COMPANY S.A.**  
NOTIFIED BODY 0103

**CERTIFICATE**  
EUROPEAN CONFORMITY CERTIFICATE

**EUROCERT a Notified Body for PED with Membership No. CE 1208**

**INTERNAL MANUFACTURING CHECKS (IMC) CE**

**CE**

**CERTIFICATE**

IONet and ICCC

IONet certifies that the organization  
**Weifang 100Tong Casting Co., Ltd.**  
Address: Weifang 100Tong Casting Co., Ltd.  
Address: Weifang 100Tong Casting Co., Ltd.

For the following field of activities  
**Steel Casted Pipe for the Heating, Thermal and General Casted Steel Water Pipe, the Hot Rolling of Casted Pipe, Steel Casted Pipe for Heating, General Fitting a Pressure and Vacuum**

Has implemented and maintains a  
**Management System**  
 Which fulfills the requirements of the following standard:  
**ISO9001:2008**

Issued on: Oct. 21, 2010  
Validity date: Oct. 26, 2010  
Registration Number: 0011202173049087600

**QUALITY MANAGEMENT SYSTEM CERTIFICATE**

Certificate No.: 0011202173049087600

We hereby certify that  
**Weifang 100Tong Casting Co., Ltd.**  
No. 1919 Jichang South Road, Weifang District, Weifang City, Shandong Province, China

has been awarded this certificate for compliance with the standard  
**ISO9001:2008**  
**GB/T 19001-2008**  
The Quality Management System applies in the following area:  
**Internal Manufacturing Checks (IMC)**

Certified since Nov. 09, 2007 Valid from Oct. 15, 2010 Valid until Oct. 09, 2012

**Product Liability Insurance Policy**  
(Original)

Policy serial No.: CEE140000025 Policy No.: A1002017140000000

This Policy covers exactly the Schedule, Scope of Cover, Exclusions, Treatment of Claims, Security Obligations, General Conditions and Special Provisions, including any Endorsements, together with any amendments as well as any additions to the Policy from time to time by China Pacific Property Insurance Co., Ltd. in the form of Endorsements.

WHEREAS THE ASSURED is named in the Schedule herein and has been named in the Certificate as written Pledged and together with any other statements made by the Insured for the purpose of this Policy is deemed to be an insured hereunder and has agreed to the terms and conditions stated in the Schedule.

NOW THIS POLICY OF INSURANCE ISSUES and is subject to the terms and conditions contained herein or incorporated herein by the Certificate and intended to be held by the Assured, subject to the insured being in compliance with the conditions of the Schedule in the manner and to the extent hereinafter provided.

**Schedule**  
Policy No. A1002017140000000

Assured	Weifang 100Tong Casting Co., Ltd.
Address	No. 1919 Jichang South Road, Weifang District, Weifang City, Shandong Province, China
Business	Internal Manufacturing Checks (IMC)
Effective Period	From 09:00 AM Oct. 15, 2010 to 09:00 AM Oct. 09, 2012
Product	Steel Casted Pipe for Heating, Thermal and General Casted Steel Water Pipe, the Hot Rolling of Casted Pipe, Steel Casted Pipe for Heating, General Fitting a Pressure and Vacuum
Sub Area	Internal Manufacturing Checks (IMC)
Policy Form	China Pacific Property Insurance Co., Ltd.
Class of Liability	Product Liability Insurance
Amount of Liability	US\$ 50,000,000 per annum aggregate
Amount of Deductible	US\$ 100,000 per occurrence
Retention or Self-Retention	None
Minimum Excess	None
Maximum Excess	None
Optional Features	None
Special Provisions	None

**Product Liability Insurance Policy**  
(Original)

Policy serial No.: CEE140000025 Policy No.: A1002017140000000

This Policy covers exactly the Schedule, Scope of Cover, Exclusions, Treatment of Claims, Security Obligations, General Conditions and Special Provisions, including any Endorsements, together with any amendments as well as any additions to the Policy from time to time by China Pacific Property Insurance Co., Ltd. in the form of Endorsements.

WHEREAS THE ASSURED is named in the Schedule herein and has been named in the Certificate as written Pledged and together with any other statements made by the Insured for the purpose of this Policy is deemed to be an insured hereunder and has agreed to the terms and conditions stated in the Schedule.

NOW THIS POLICY OF INSURANCE ISSUES and is subject to the terms and conditions contained herein or incorporated herein by the Certificate and intended to be held by the Assured, subject to the insured being in compliance with the conditions of the Schedule in the manner and to the extent hereinafter provided.

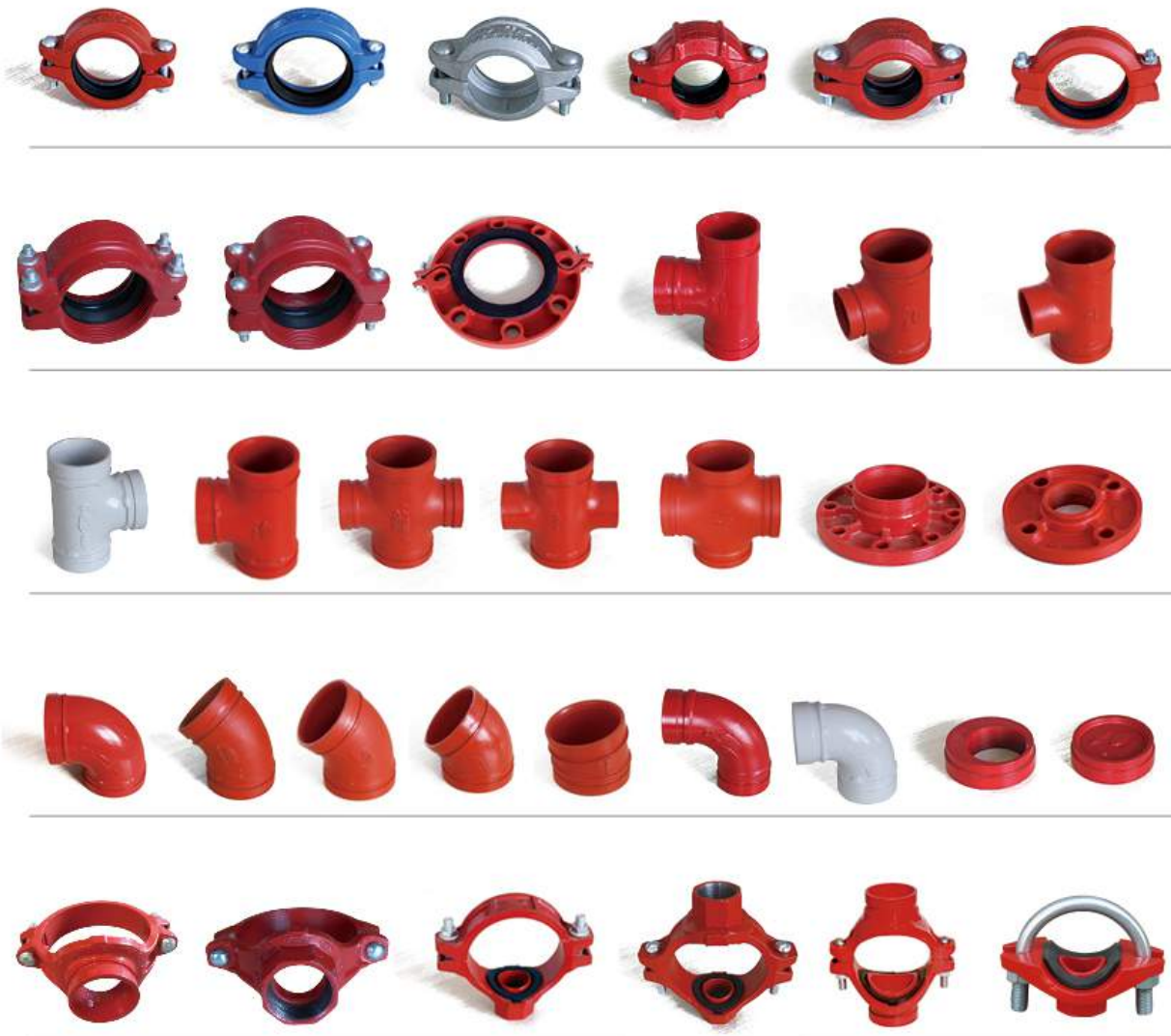


100Tong ductile iron casting conforming to ASTM A536 65-45-12 equal to QT450-12.

Coating: 1.painting 2.epoxy 3.dacromet 4.galvanized

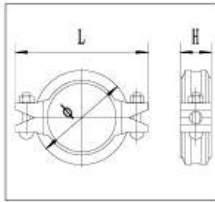
Color: 1.Red 2.Blue 3.White 4.Orange

Note:painting or epoxy coating are fit for water system at ordinary temperature if apply on other occasions,please contact 100TONG engineer.



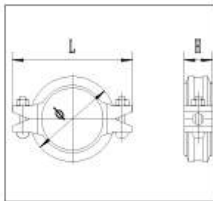
# XGQT01

## Rigid Coupling



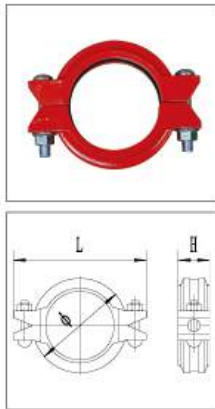
Nominal Size mm/in	Pipe O.D mm/in	Working Pressure PSI/MPa	Bolt Size No.-Size mm	Dimensions mm/in		
				Ø	L	H
25 1	33.7 1.327	500 3.45	2-M10x45	60 2.362	102 4.016	45 1.772
32 1¼	42.4 1.669	500 3.45	2-M10x45	70 2.756	106 4.173	44 1.732
40 1½	48.3 1.900	500 3.45	2-M10x45	73 2.874	108 4.252	44 1.732
50 2	57.0 2.245	500 3.45	2-M10x55	83 3.268	122 4.803	45 1.772
50 2	60.3 2.375	500 3.45	2-M10x55	87 3.425	123 4.843	44 1.732
65 2½	73.0 2.875	500 3.45	2-M10x55	100 3.937	138 5.433	44 1.732
65 2½	76.1 3.000	500 3.45	2-M10x55	103 4.055	142 5.591	45 1.772
80 3	88.9 3.500	500 3.45	2-M12x60	117 4.606	166 6.535	45 1.772
100 4	108.0 4.250	500 3.45	2-M12x65	137 5.393	188 7.401	48 1.889
100 4	114.3 4.500	500 3.45	2-M12x65	139 5.472	190 7.480	49 1.929
125 5	133.0 5.250	400 2.75	2-M12x75	163 6.417	210 8.268	49 1.929
125 5	139.7 5.500	400 2.75	2-M12x75	168 6.614	218 8.583	49 1.929
150 6	159.0 6.250	400 2.75	2-M12x75	192 7.559	242 9.528	49 1.929
150 6	165.1 6.500	400 2.75	2-M12x75	193 7.598	241 9.488	49 1.929
150 6	168.3 6.625	400 2.75	2-M12x75	198.5 7.815	249 9.803	50 1.969
200 8	219.1 8.625	300 2.07	2-M16x85	253 9.961	320 12.598	59 2.323
250 10	273 10.748	300 2.07	2-M22x130	335 13.189	426 16.772	68 2.677
300 12	323.9 12.752	300 2.07	2-M22x130	380 14.96	470 18.504	65 2.559

## XGQT02 Flexible Coupling



Nominal Size mm/in	Pipe O.D mm/in	Working Pressure PSI/MPa	Bolt Size No.-Size mm	Dimensions mm/in		
				Ø	L	H
25 1	33.7 1.327	500 3.45	2-M10x45	60 2.362	98 3.858	43.5 1.713
32 1¼	42.4 1.669	500 3.45	2-M10x45	67 2.638	106 4.173	44 1.732
40 1½	48.3 1.900	500 3.45	2-M10x45	73 2.874	108 4.252	44 1.732
50 2	57.0 2.245	500 3.45	2-M10x55	83 3.268	122 4.803	45 1.772
50 2	60.3 2.375	500 3.45	2-M10x55	87 3.425	123 4.843	44 1.732
65 2½	73.0 2.875	500 3.45	2-M10x55	100 3.937	138 5.433	44 1.732
65 2½	76.1 3.000	500 3.45	2-M10x55	103 4.055	142 5.591	45 1.772
80 3	88.9 3.500	500 3.45	2-M12x60	117 4.606	166 6.535	45 1.772
100 4	108.0 4.250	500 3.45	2-M12x65	137 5.393	188 7.401	48 1.889
100 4	114.3 4.500	500 3.45	2-M12x65	139 5.472	190 7.480	49 1.929
125 5	133.0 5.250	400 2.75	2-M12x75	163 6.417	210 8.268	49 1.929
125 5	139.7 5.500	400 2.75	2-M12x75	168 6.614	218 8.583	49 1.929
150 6	159.0 6.250	400 2.75	2-M12x75	190 7.48	239 9.409	49 1.929
150 6	165.1 6.500	400 2.75	2-M12x75	193 7.598	241 9.488	49 1.929
150 6	168.3 6.625	400 2.75	2-M12x75	198.5 7.815	249 9.803	50 1.969
200 8	219.1 8.625	300 2.07	2-M16x85	253 9.961	320 12.598	59 2.323
250 10	273 10.748	300 2.07	2-M22x130	317 12.48	401 15.787	63 2.48
300 12	323.9 12.752	300 2.07	2-M22x130	375 14.764	455 17.913	64 2.52
350 14	355.6 14	300 2.07	3-M22x130	418 16.457	508 20	74 2.913
350 14	377 14.843	300 2.07	3-M22x130	441 17.362	535 21.063	78 3.071
400 16	406.4 16	300 2.07	3-M22x130	467 18.386	567 22.323	78 3.071
400 16	425.5 16.752	300 2.07	2-M22x130	486 19.134	580 22.835	78 3.071

## Shouldered Coupling



Nominal Size mm/in	Pipe O.D mm/in	Working Pressure PSI/MPa	Bolt Size No.-Size mm	Dimensions mm/in		
				Ø	L	H
50	60.3	500	2-M12x60	97	132	48
2	2.375	3.5		3.957	5.197	1.89
80	88.9	500	2-M12x75	125	170	48
3	3.500	3.5		4.921	6.692	1.89
100	114.3	500	2-M12x75	157	205	52
4	4.500	3.5		6.181	8.070	2.047
150	165.1	500	2-M16x85	213	272	52
6	6.500	3.5		8.386	10.708	2.047
200	219.1	500	2-M20x100	278	345	60
8	8.625	3.5		10.945	13.583	2.362
250	273	500	2-M22x130	340	415	64
10	10.748	3.5		13.38	16.339	2.52
300	323.9	500	2-M22x130	387	474	64
12	12.752	3.5		15.236	18.661	2.52
350	377	500	2-M22x130	438	518	76
14	14.843	3.5		17.244	20.394	2.992
400	425.5	500	2-M30x140	506	605	76
16	16.752	3.5		19.921	23.819	2.992

## HDPE Coupling



Nominal Size mm/in	Pipe O.D mm/in	Working Pressure PSI/MPa	Bolt Size No.-Size mm	Dimensions mm/in		
				Ø	L	H
50	60.3	300	4-M12 x 60	83	120	116
2	2.375	2.07		3.268	4.724	4.567
	63	300	4-M10 x 55	89	116	105
	2.48	2.07		3.504	4.567	4.134
80	88.9	300	4-M12 x 75	114	166	118
3	3.5	2.07		4.5	6.535	4.647
	110	300	4-M12 x 75	137	180	110
	4.33	2.07		5.394	7.087	4.331
100	114	300	4-M12 x 75	143	201	147
4	4.5	2.07		5.63	7.913	5.787
	160	300	4-M12 x 75	188	235	118
	6.299	2.07		7.402	9.252	4.646
150	168.3	300	4-M16 x 85	202	252	150
6	6.626	2.07		7.953	9.921	5.906
200	219.1	300	4-M16 x 85	258	320	152
8	8.626	2.07		10.157	12.598	5.984
	252	300	4-M16 x 100	288	350	141
	9.921	2.07		11.339	13.780	5.551
250	273	300	4-M20 x 100	313	390	165
10	10.748	2.07		12.323	15.354	6.496
300	323.9	300	4-M20 x 120	367	455	183
12	10.748	2.07		14.449	17.913	7.205

## Transition HDPE couplings

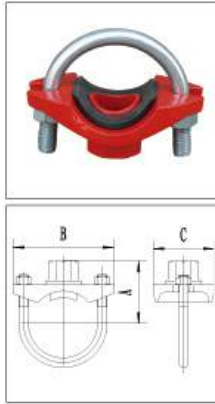


Nominal Size mm/in	Pipe O.D mm/in	Working Pressure PSI/MPa	Bolt Size No.-Size mm	Dimensions mm/in		
				Ø	L	H
50	60.3	300	4-M10 x 55	84	146	78
2	2.375	2.07		3.307	5.748	3.071
80	88.9	300	4-M12 x 75	112	174	79
3	3.5	2.07		4.409	6.85	3.11
100	114	300	4-M12 x 75	142	208	95
4	4.5	2.07		5.591	8.189	3.74
150	168.3	300	4-M16 x 85	198	280	96
6	6.626	2.07		7.795	11.024	3.78
200	219.1	300	4-M16 x 85	260	342	107
8	8.626	2.07		10.236	13.465	4.213
250	273	300	4-M20 x 120	314	424	128
10	10.748	2.07		12.362	16.693	5.039
300	323.9	300	4-M20 x 120	368	470	129
12	10.748	2.07		14.488	18.504	5.079



## XGQT03 U

### U-Bolted Mechanical Tee Threaded



Nominal Size mm/in	Pipe O.D mm/in	Working Pressure PSI/Mpa	U Bolt Size NO.-Size mm	Dimensions mm/in			Hole cutting dimensions mm/in
				A	B	C	
25x15 1x1/2	33.7x21.3 1.327x0.839	300 2.07	M10x25	49 1.929	76 2.992	43 1.654	24 0.945
25x20 1x3/4	33.7x26.9 1.327x1.059	300 2.07	M10x25	58 2.283	84 3.307	43 1.693	24 0.945
32x15 1 1/2x1/2	42.4x21.3 1.669x0.839	300 2.07	M10x28.5	43 1.693	90 3.543	56 2.205	30 1.181
32x20 1 1/2x3/4	42.4x26.9 1.669x1.059	300 2.07	M10x28.5	45 1.772	90 3.543	56 2.205	30 1.181
32x25 1 1/2x1	42.4x33.7 1.669x1.327	300 2.07	M10x28.5	50 1.969	90 3.543	56 2.205	30 1.181
40x15 1 1/2x1/2	48.3x21.3 1.900x0.839	300 2.07	M10x28.5	43 1.693	93 3.661	59 2.323	30 1.181
40x20 1 1/2x3/4	48.3x26.9 1.900x1.059	300 2.07	M10x28.5	54 2.126	93 3.661	59 2.323	30 1.181
40x25 1 1/2x1	48.3x33.7 1.900x1.327	300 2.07	M10x28.5	58 2.283	93 3.661	59 2.323	30 1.181
50x15 2x1/2	60.3x21.3 2.375x0.839	300 2.07	M10x30	54 2.126	96 3.780	59 2.323	30 1.181
50x20 2x3/4	60.3x26.9 2.375x1.059	300 2.07	M10x30	56 2.205	96 3.780	59 2.323	30 1.181
50x25 2x1	60.3x33.7 2.375x1.327	300 2.07	M10x30	66 2.598	96 3.780	59 2.323	30 1.181
65x15	73.1x21.3 2.878x0.839	300 2.07	M10x30	60 2.362	110 4.331	59 2.323	30 1.181
65x20	73.1x26.9 2.878x1.059	300 2.07	M10x30	63 2.480	110 4.331	59 2.323	30 1.181
65x25	73.1x33.7 2.878x1.327	300 2.07	M10x30	70 2.756	110 4.331	59 2.323	30 1.181
65x15	76.1x21.3 2.996x0.839	300 2.07	M10x30	61 2.402	110 4.331	59 2.323	30 1.181
65x20	76.1x26.9 2.996x1.059	300 2.07	M10x30	67 2.638	110 4.331	59 2.323	30 1.181
65x25	76.1x33.7 2.847x1.327	300 2.07	M10x30	74 2.913	110 4.331	59 2.323	30 1.181

## XGQT02 B

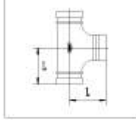
### Reducing Flexible Coupling



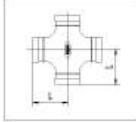
Nominal Size mm/in	Pipe O.D mm/in	Working Pressure PSI/MPa	Bolt Size No.-Size mm	Dimensions mm/in		
				Ø	L	H
50*40 2*1 1/2	60.3*48.3 2.375*1.900	300 2.07	2-M10*55	90 3.543	129 5.079	47 1.850
65*40 2 1/2*1 1/2	73.0*48.3 2.874*1.900	300 2.07	2-M10*55	101 3.976	137 5.394	48 1.890
65*50 2 1/2*2	73.0*60.3 2.874*2.375	300 2.07	2-M10*55	101 3.976	137 5.394	48 1.890
65*40 2 1/2*1 1/2	76.1*48.3 2.996*1.900	300 2.07	2-M10*55	105 4.134	140 5.512	48 1.890
65*50 2*2	76.1*60.3 2.996*2.375	300 2.07	2-M10*55	105 4.134	140 5.512	48 1.890
80*40 3*1 1/2	88.9*48.3 3.500*1.900	300 2.07	2-M12*65	120 4.724	164 6.457	48 1.890
80*50 3*2	88.9*60.3 3.500*2.375	300 2.07	2-M12*65	120 4.724	164 6.457	48 1.890
80*65 3*2 1/2	88.9*73.0 3.500*2.874	300 2.07	2-M12*65	120 4.724	164 6.457	48 1.890
80*65 3*2 1/2	88.9*76.1 3.500*2.996	300 2.07	2-M12*65	120 4.724	164 6.457	48 1.890
100*40 4*1 1/2	114.3*48.3 4.500*1.900	300 2.07	2-M12*65	150 5.906	195 7.677	49 1.929
100*50 4*2	114.3*60.3 4.500*2.375	300 2.07	2-M12*65	150 5.906	195 7.677	49 1.929
100*65 4*2 1/2	114.3*73 4.500*2.874	300 2.07	2-M12*65	150 5.906	195 7.677	49 1.929
100*65 4*2 1/2	114.3*76.1 4.500*2.996	300 2.07	2-M12*65	150 5.906	195 7.677	49 1.929
100*80 4*3	114.3*88.9 4.500*3.500	300 2.07	2-M12*65	150 5.906	195 7.677	49 1.929
150*100 6*4	165.1*114.3 6.500*4.500	300 2.07	2-M12*75	203 7.992	235 9.252	50 1.969
150*80 6*3	168.3*88.9 6.625*3.500	300 2.07	2-M12*75	203 7.992	235 9.252	50 1.969
150*100 6*4	168.3*114.3 6.625*4.500	300 2.07	2-M12*75	203 7.992	235 9.252	50 1.969
200*150 8*6	219.1*168.3 8.625*6.625	300 2.07	2-M16*100	264 10.394	313 12.323	60 2.362



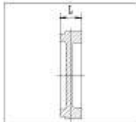
**XGQT12**  
Tee



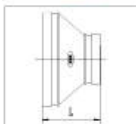
**XGQT14**  
Cross



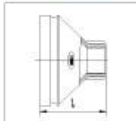
**XGQT20**  
Cap



**XGQT16**  
Reducer  
(grooved)

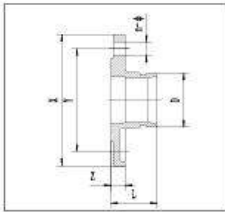


**XGQT16 S**  
Reducer  
(threaded)



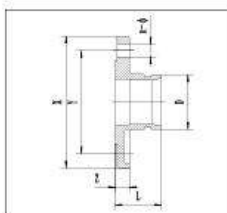
Size	Pipe O.D.	Tee		Cross	Eccentric Cap	Cap	Reducer grooved	Reducer threaded	Eccentric Reducer
		Standard	Short	Standard					
		L	L	L	L	L			
DN	mm	mm	mm	mm	mm	mm	mm	mm	mm
in	in	in	in	in	in	in	in	in	in
25	33.7	57	57	57	25	25	64	64	64
1	1.315	2.244	2.244	2.244	0.99	0.99	2.519	2.519	2.519
32	42.4	70	60	60	25	25	64	64	64
1¼	1.660	2.755	2.362	2.362	0.99	0.99	2.519	2.519	2.519
40	48.3	70	60	60	25	25	64	64	64
1½	1.900	2.755	2.362	2.362	0.99	0.99	2.519	2.519	2.519
50	57.0	83	70	70	25	25	64	64	64
	2.244	3.267	2.755	2.775	0.99	0.99	2.519	2.519	2.519
50	60.3	83	70	70	25	25	64	64	64
2	2.375	3.267	2.755	2.755	0.99	0.99	2.519	2.519	2.519
65	73.0	95	76	76	25	25	64	64	64
2½	2.875	3.74	2.992	2.992	0.99	0.99	2.519	2.519	2.519
65	76.1	95	76	76	25	25	64	64	64
	3.000	3.74	2.992	2.992	0.99	0.99	2.519	2.519	2.519
80	88.9	108	86	86	25	25	64	64	64
3	3.500	4.251	3.386	3.326	0.99	0.99	2.519	2.519	2.519
100	108.0	127	101.5	101.5	25	25	76	76	76
	4.252	5	3.996	3.996	0.99	0.99	2.99	2.99	2.99
100	114.3	127	101.5	101.5	25	25	76	76	76
4	4.500	5	3.996	3.996	0.99	0.99	2.99	2.99	2.99
125	133.0	140	122	122	25	25	89	89	89
	5.250	5.511	4.803	4.803	0.99	0.99	3.504	3.504	3.504
125	139.7	140	122	122	25	25	89	89	89
5	5.500	5.511	4.803	4.803	0.99	0.99	3.504	3.504	3.504
150	159.0	165	140	140	25	25	102	102	102
	6.260	6.496	5.511	5.511	0.99	0.99	4.015	4.015	4.015
150	165.1	165	140	140	25	25	102	102	102
	6.500	6.496	5.511	5.511	0.99	0.99	4.015	4.015	4.015
150	168.3	165	140	140	25	25	102	102	102
6	6.625	6.496	5.511	5.511	0.99	0.99	4.015	4.015	4.015
200	219.1	197	175	175	30	30	127	127	127
8	8.625	7.755	6.889	6.889	1.181	1.181	5	5	5
250	273.0	229	215	215	32	32	152		
10	10.750	9.015	8.464	8.464	1.259	1.259	5.98		
300	323.9	254	245	245	32	32	178		
12	12.750	10	9.645	9.645	1.259	1.259	7		
350	377.0	280	280	280	40	40	160		
	14.843	11.024	11.024	11.024	1.575	1.575	6.299		

## XGQT18 Flange Adaptor



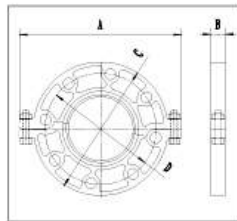
Nominal Size mm/in	Pipe O.D mm/in D	Working Pressure PSI/MPa	Dimensions mm/in				Bolt Size No.-Size mm
			L mm/in	X mm/in	Y mm/in	Z mm/in	
50 2	60.3 2.375	230 1.6	60.3 2.37	165 6.496	125 4.92	16 0.629	4-M16
65 2½	73.0 2.875	230 1.6	60.3 2.37	185 7.283	145 5.70	16 0.629	4-M16
65 2½	76.1 3.000	230 1.6	60.3 2.37	185 7.283	145 5.70	16 0.629	4-M16
80 3	88.9 3.500	230 1.6	60.3 2.37	200 7.874	160 6.29	16 0.629	8-M16
100 4	108.0 4.250	230 1.6	70 2.755	220 8.661	180 7.08	16 0.629	8-M16
100 4	114.3 4.500	230 1.6	70 2.755	220 8.661	180 7.08	16 0.629	8-M16
125 5	133.0 5.250	230 1.6	60.3 2.37	250 9.842	210 8.26	18 0.708	8-M16
125 5	139.7 5.500	230 1.6	60.3 2.37	250 9.842	210 8.26	18 0.708	8-M16
150 6	159.0 6.250	230 1.6	70 2.755	285 11.22	240 9.448	18 0.708	8-M20
150 6	165.1 6.500	230 1.6	70 2.755	285 11.22	240 9.448	18 0.708	8-M20
150 6	168.3 6.625	230 1.6	70 2.755	285 11.22	240 9.448	18 0.708	8-M20
200 8	219.1 8.625	230 1.6	76.1 2.99	340 13.38	295 11.61	19 0.748	12-M20
250 10	273.0 10.750	230 1.6	85 3.346	405 15.944	355 13.97	21 0.826	12-M24
300 12	323.9 12.750	230 1.6	90 3.543	460 18.11	410 16.14	24 0.944	12-M24
350 14	377.0 14.843	230 1.6	100 3.937	520 20.47	470 18.50	26 1.02	16-M24

## XGQT18 Flange Adaptor ANSI-Class 150



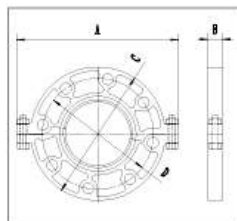
Nominal Size mm/in	Pipe O.D mm/in D	Working Pressure PSI/MPa	Dimensions mm/in				Bolt Size No.-Size mm
			L mm/in	X mm/in	Y mm/in	Z mm/in	
50 2	60.3 2.375	300 2.07	60.3 2.37	152 5.98	120.5 4.744	19 0.748	4-M16
65 2½	73.0 2.875	300 2.07	60.3 2.37	178 7.00	139.5 5.693	24 0.944	4-M16
80 3	88.9 3.500	300 2.07	60.3 2.37	190 7.48	152.5 6.00	24 0.944	4-M16
100 4	114.3 4.500	300 2.07	70 <sup>8</sup> 2.755	229 9.015	190.5 7.5	24 0.944	8-M16
125 5	139.7 5.500	300 2.07	70 2.755	254 10	216 8.503	24 0.944	8-M20
150 6	168.3 6.625	300 2.07	70 2.755	279 10.98	241.5 9.507	25 0.984	8-M20
200 8	219.1 8.625	300 2.07	76.1 2.99	343 13.50	298.5 11.751	29 1.141	8-M20
250 10	273.0 10.750	300 2.07	85 3.346	406 15.98	362 14.251	30 1.181	12-M22
300 12	323.9 12.750	300 2.07	90 3.543	483 19.01	432 17.00	32 1.259	12-M22

## XGQT19 Grooved Flange



Nominal Size mm/in	Pipe O.D mm/in	Working Pressure PSI/MPa	Dimensions mm/in				Bolt Size No.-Size mm
			A mm/in	B mm/in	C mm/in	D mm/in	
50 2	60.3 2.375	230 1.6	222 8.740	23 0.906	165 6.496	125 4.921	4-M16
65	76.1 3.000	230 1.6	240 9.448	23 0.906	185 7.283	145 5.708	4-M16
80 3	88.9 3.500	230 1.6	252 9.921	23 0.906	192 7.559	160 6.299	8-M16
100 4	114.3 4.500	230 1.6	248 9.763	23 0.906	220 8.661	180 7.086	8-M16
125	139.7 5.500	230 1.6	316 12.44	24 0.944	250 9.842	210 8.267	8-M16
150 6	168.3 6.625	230 1.6	346 13.622	24 0.944	285 11.22	240 9.448	8-M20
200 8	219.1 8.625	230 1.6	418 16.456	28 1.102	340 13.38	295 11.614	12-M20

## XGQT19 Grooved Flange ANSI-Class 150



Nominal Size mm/in	Pipe O.D mm/in	Working Pressure PSI/MPa	Dimensions mm/in				Bolt Size No.-Size mm
			A mm/in	B mm/in	C mm/in	D mm/in	
50 2	60.3 2.375	300 2.07	206 8.110	22 0.866	152 5.984	121 4.763	4-M16
65 2½	73.0 2.875	300 2.07	230 9.055	22 0.866	178 7.007	140 5.511	4-M16
80 3	88.9 3.500	300 2.07	242 9.527	24 0.944	191 7.519	152 5.984	4-M16
100 4	114.3 4.500	300 2.07	280 11.023	24 0.944	229 9.015	191 7.519	8-M16
125 5	139.7 5.500	300 2.07	325 12.795	24.5 0.964	254 10	216 8.503	8-M20
150 6	168.3 6.625	300 2.07	345 13.583	24.5 0.964	282 11.102	241.5 9.508	8-M20
200 8	219.1 8.625	300 2.07	414.3 16.311	28 1.102	341.4 13.44	298.5 11.751	8-M20

## Gasket Ring



Material Composition	Applicable Temperature	Application Scope
EPDM	-34℃—+150	Cold and hot water, non-oil gas, diluted acid, alkaline salt, and multi-chemicals (free of hydrocarbon). Oil-like mediums are forbidden.
Silicon rubber	-40℃—+177	Drinking water, hot water, high-temperature air and some high-temperature chemicals. Oil-like mediums are forbidden.
Nitrile rubber	-29℃—+82℃	Oil, mineral oil, plant oil, hot water, temperature over 65℃ is not allowed.

Notes: 1. Gasket rings of different materials will be used for different liquid mediums.  
2. Products can be supplied as per Customers requirements.

## Bolts and Nuts



Raw material of bolts and nuts are taken as 40 cr, and its mechanical properties should reach Gr.8.8 after hot-treatment. Only one wrench will be used during the installation, safely and firmly.

## Hole Cutting Tool



- Stable feeding mechanism with the support of dovetail guide
- Three-phase motor, contributes to high efficiency

## Grooving Machine



This machine is applicable for channeling of zinc-plated pipes, seamless pipes, stainless steel pipes and plastic-lined pipes of various sizes ranging from  $\phi$  33mm to  $\phi$  630mm.

## Castings



## Valve



If you need more information, please contact us.

## **Weifang 100tong Casting Co.,Ltd.**

**Address:**No.1919 Jichang South Road,  
Weicheng District,Weifang City,Shandong Province,China.

**Tel:** (86) 536 2257171

**Fax:** (86) 536 8125188

**E-mail:** trade@100-tong.com

**Http:** //www.100t.cc

## **Bao Tin Valve Co.,Ltd**

**Address:** No. A52 Le Thi Rieng Street, Thoi An Ward, District 12, Ho Chi Minh City, Vietnam.

**Mobile:** (84) 902 898 892

**Wechat/ Zalo/ Whatsapp:** (84) 931 27 2222

**Email:** sales@valves.com.vn

**Https://valves.com.vn**

